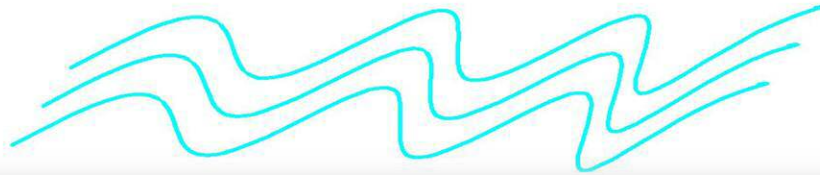


# ***SEA-TRONICS SERVICES INC.***



## ***SPEED MONITOR BOARD PROVIDING DRY CONTACT OUTPUT FOR OVER/UNDER SPEED, OR SPECIFIC RPM***

### ***General Information:***

- *Monitor RPM using a proximity sensor*
- *Monitor speed up to 3000 RPM*
- *Operate on 12 or 24 VDC power*
- *Provides dry contact relay output*
- *Fine adjustment for both RPM limits*
- *Watch dog monitoring circuit.*

### ***Possible Use:***

- *Engine overspeed detection*
- *Engine under speed detection*
- *Monitor speed between two settings*
- *Proportional 4-20 mA*
- *Monitor speed of rotating equipment*
- *Custom solutions can be provided.*

*Boards are manufactured in Vancouver, B.C., Canada. Boards carry one year warranty from the date of purchase.*

*Please provide min and max RPM, number of pulses per revolution and specific requirements.*

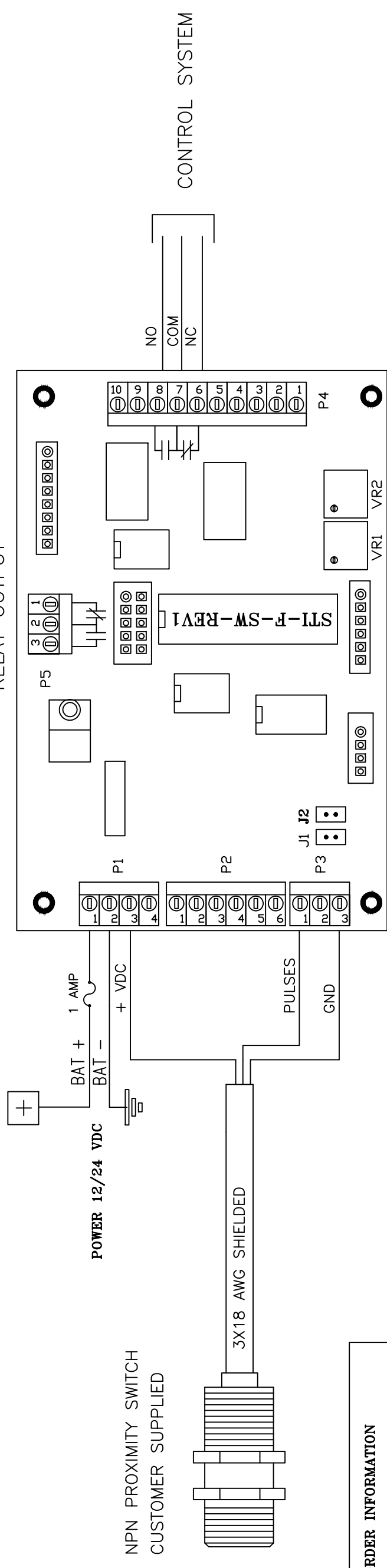
*If a specific operation is required and is not covered under the above specifications, Sea-Tronics Services Inc. is willing to custom design the software for this board to provide a solution for your application. Please contact Sea-Tronics Services Inc. with your specific requirements.*

*Sea-Tronics Services Inc. 11176 Huff Boulevard, Delta, B.C., V4E 1M2*

**[www.seatronicsservices.com](http://www.seatronicsservices.com), email: [seatronicsservices@gmail.com](mailto:seatronicsservices@gmail.com) or by phone at 778-552-9392.**

**SPEED MONITOR BOARD  
DRY CONTACTS TO ACTIVATE AT SPECIFIED FREQUENCY**

WATCH DOG  
RELAY OUTPUT



VR1 WILL PROVIDE 10% ADJUSTMENT FOR MIN SPEED.  
VR2 WILL PROVIDE 10% ADJUSTMENT FOR MAX SPEED.

NPN PROXIMITY SWITCH  
CUSTOMER SUPPLIED

ORDER INFORMATION	
MIN RPM	
MAX RPM	
# PULSES PER REVOLUTION	
OVER SPEED	
UNDER SPEED	

**NOTE ABOUT RPM MONITOR OPERATION:**  
THE SPEED SENSOR BOARD WILL MONITOR THE RPM AND WILL ENGAGE THE RELAY ONCE THE SPEED IS ABOVE THE SPECIFIED RPM AND WILL DISENGAGE THE RELAY ONCE THE SPEED IS BELOW THE SPECIFIED RPM.  
THE CARD WILL BE PROGRAMMED BASED ON THE ENGINE SPEED, THE NUMBER OF PULSES PER ROTATION AND THE SPECIFIED RPM TO ACTIVATE THE RELAY.  
A WATCH DOG RELAY OUTPUT IS AVAILABLE AT P5 TO INDICATE THE STATUS OF THE CARD.  
THE BOARD REQUIRES 12 OR 24 VDC POWER, FOR PROTECTION USE A 1 AMP FUSE.  
MOUNT THE BOARD IN A JUNCTION BOX TO PROTECT IT FROM THE ELEMENT.

		TITLE	
		SPEED MONITOR BOARD SYSTEM BLOCK DIAGRAM	
www.seatronicservices.com.		PROJECT	
CUSTOMER	SPEED MONITOR BOARD	CONTRACT #	
N/A		N/A	
DRAWN	H.A.	DD MM YY	PART #
CHECKED	H.A.	19 08 19	STI-F-SW-REV1
		DRAWING #	SCALE
		B-100113	N/A
		SHEET	REVISION
		1/1	A