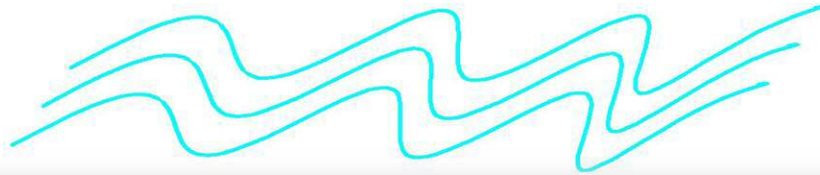


SEA-TRONICS SERVICES INC.



PUMP AUTO-START CONTROL SYSTEM FOR DUAL HYDRAULIC POWER UNITS

General Information:

- *Monitor the operation of two HPU's*
- *Display if a pump is running locally*
- *Display if AC power is available*
- *System operates on 24 VDC power*
- *Manual start or auto-start mode*
- *Manual pump operation using the starter/alarm panels*
- *Auto-start mode to allow one pump to start if the other has failed*
- *Visual and sound alarms if a pump has failed to start in auto-mode or if any pump has failed*
- *Auto-start will not engage if AC power is not available, if operating in local mode, if one pump has failed or If both pumps are running*
- *ABS, DNV & Lloyd's type approved IDEC PLC at the heart of the system.*

Possible Use:

- *Applications where it is a must to monitor the operation of a hydraulic power unit and automatically start the auxiliary pump if the primary pump has failed, the system will provide manual or automatic start mode of operation.*
- *The control system will monitor various sensors from the hydraulic power units and once a failure is detected it will automatically stop the faulty pump and start the healthy one.*

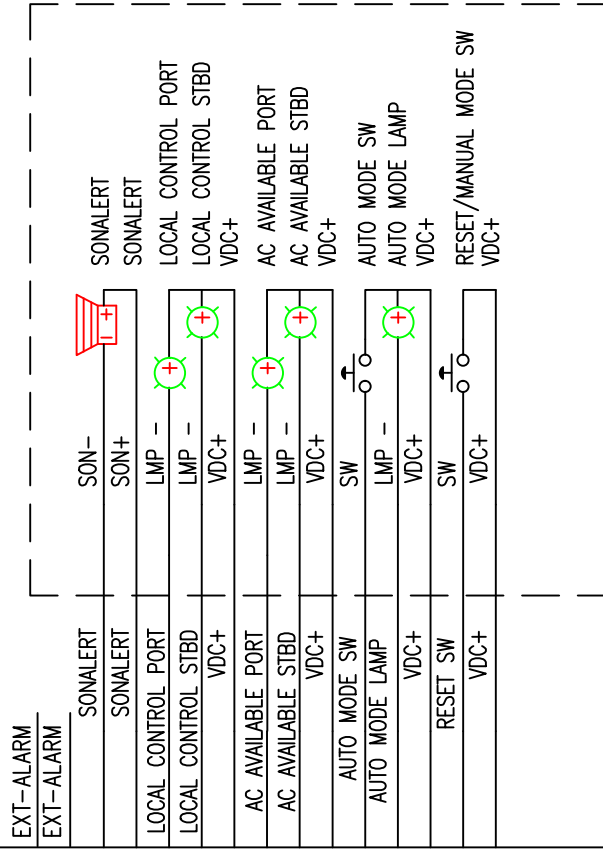
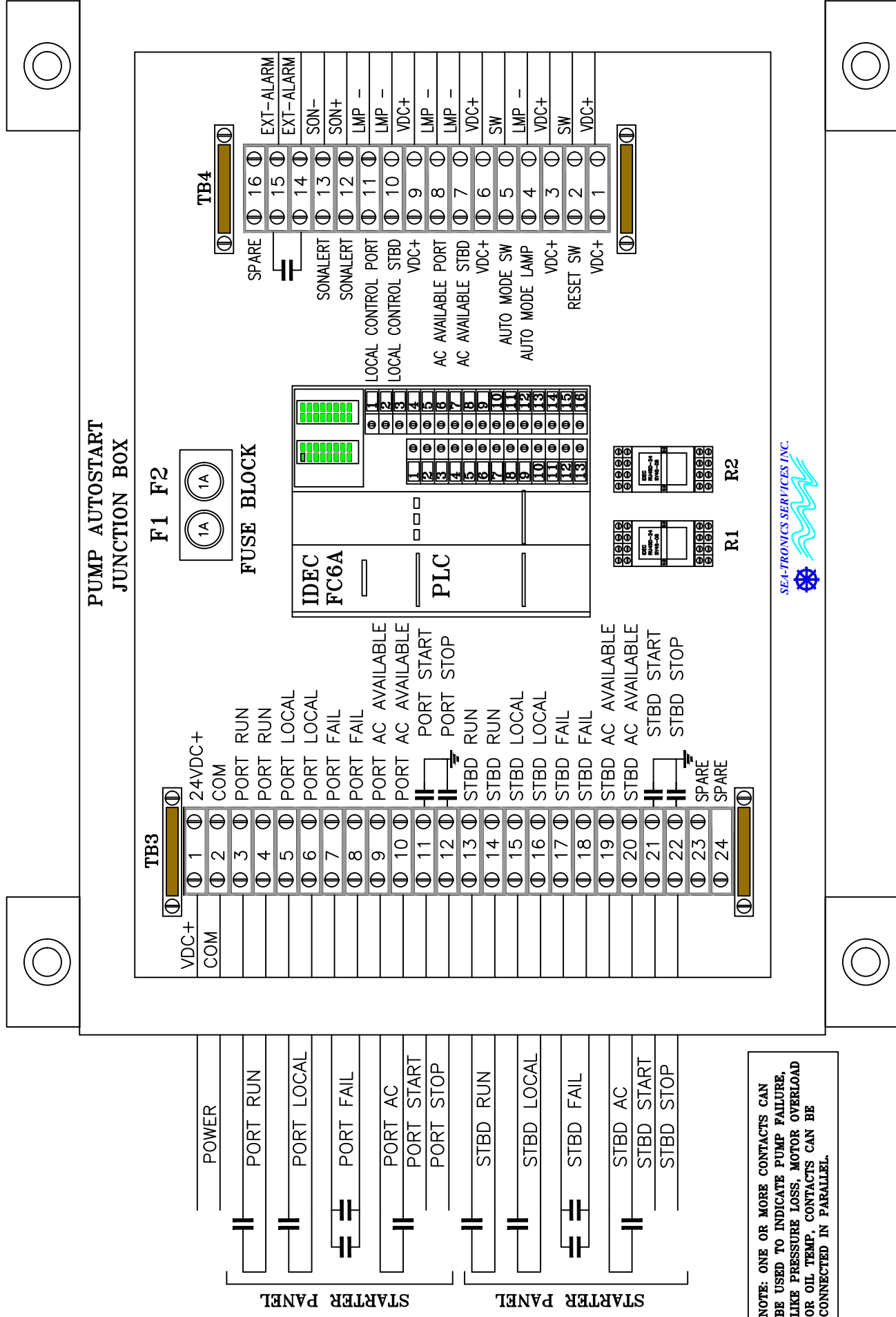
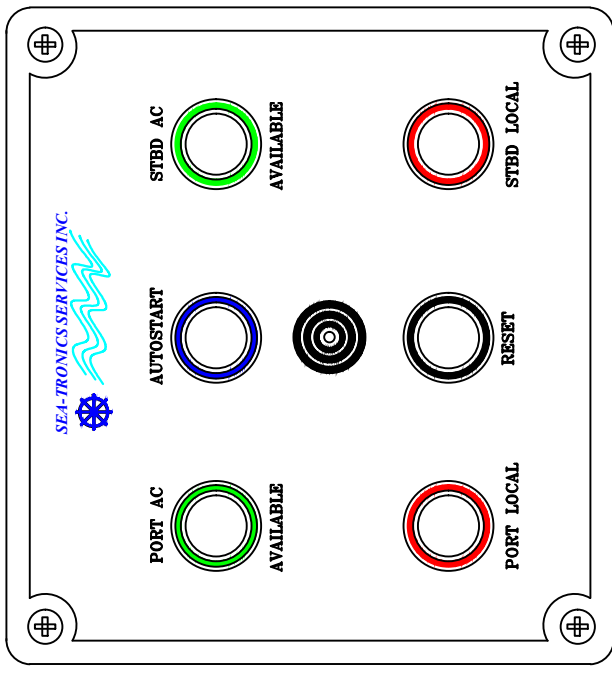
Control system is manufactured in Vancouver, B.C., Canada. System has one-year warranty.

If a specific operation is desired, Sea-Tronics Services Inc. is willing to custom design the system to match your application. Please contact us with your specific requirement.

Sea-Tronics Services Inc. 11176 Huff Boulevard, Delta, B.C., V4E 1M2

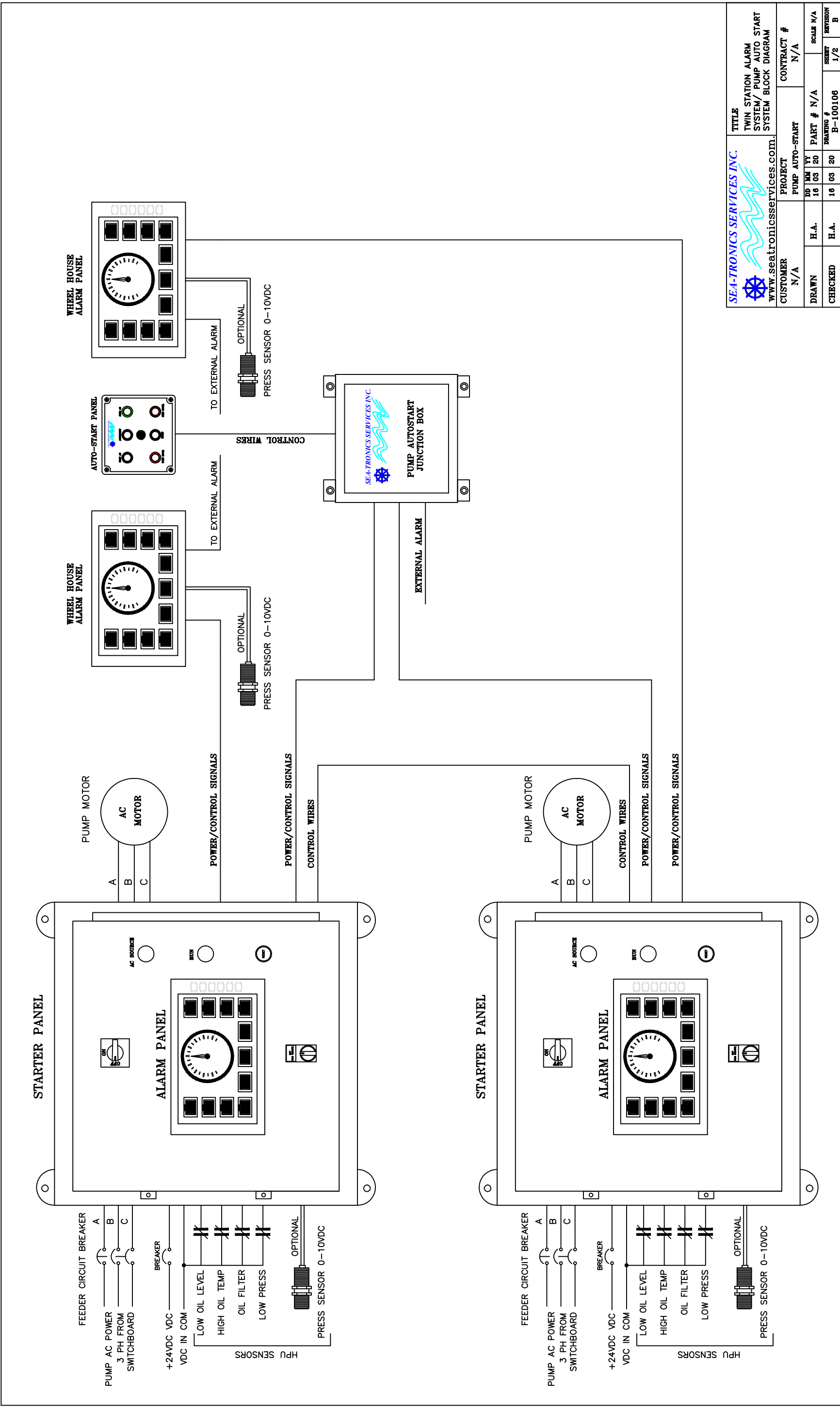
www.seatronicsservices.com, email: seatronicsservices@gmail.com or by phone at 778-552-9392.

AUTO-START PANEL



NOTE: ONE OR MORE CONTACTS CAN BE USED TO INDICATE PUMP FAILURE, LIKE PRESSURE LOSS, MOTOR OVERLOAD OR OIL TEMP. CONTACTS CAN BE CONNECTED IN PARALLEL.

		TITLE PUMP AUTO START INTERNAL CONNECTION DIAGRAM	
		CUSTOMER N/A	PROJECT PUMP AUTO-START
DRAWN H.A.	DATE 16 03 20	PART # N/A	SCALE N/A
CHECKED H.A.	REVISION # B	DRAWING # B-100106	REVISION 3/3



		TITLE TWIN STATION ALARM SYSTEM/ PUMP AUTO START SYSTEM BLOCK DIAGRAM	
www.seatronicservices.com		PROJECT PUMP AUTO-START	
CUSTOMER N/A	CONTRACT # N/A	DATE 16 03 20	SCALE N/A
DRAWN H.A.	PART # N/A	DRAWING # B-100106	REVISION B
CHECKED H.A.		SECRET 1/2	