

# SEA-TRONICS SERVICES INC.



## HYDRAULIC POWER UNIT TOUCH ALARM PANEL

### General information:

- 10 Monitored alarm points
- Analog reading of system pressure
- Data logging in real time
- Adjustable delays per alarm point
- 12 or 24 VDC power
- Visual and audible alarm
- Dimming for night operation
- External dry contact to connect to machinery alarm
- CE Mark, ABS Type Approval and NEMA 4X rating.

### Monitored Alarms:

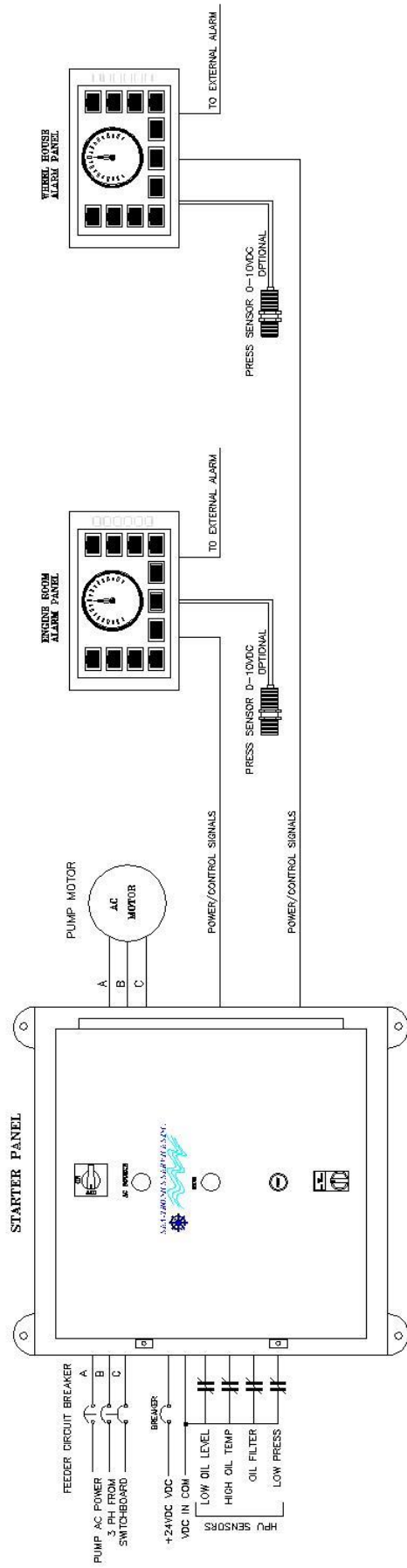
- AC power
- DC power
- Phase failure
- System pressure
- Motor overload
- Oil temperature
- Low oil level
- Filter status.



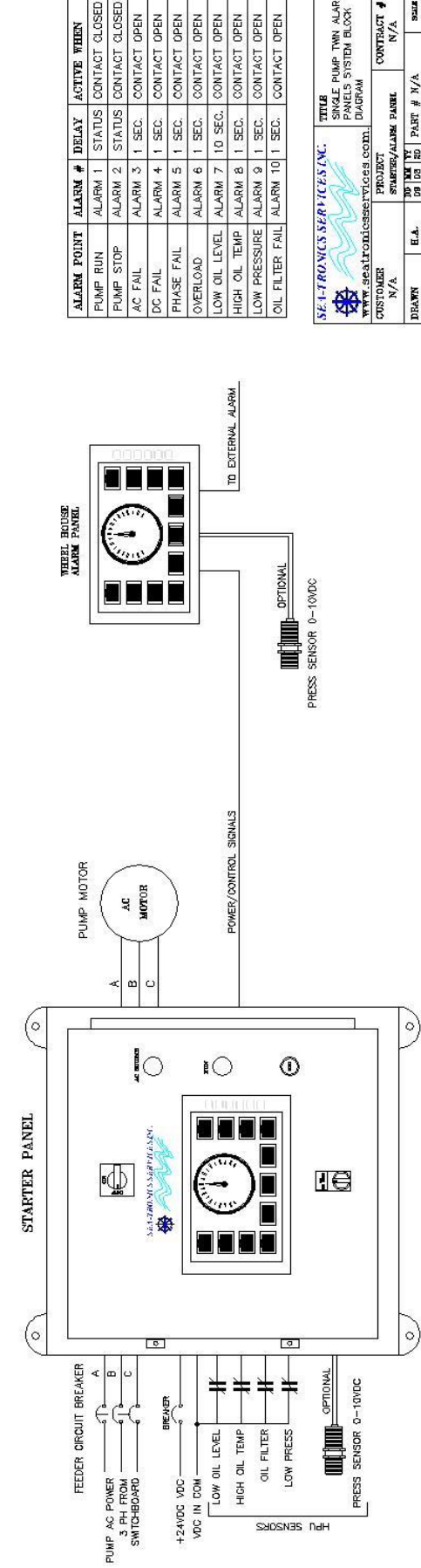
Sea-Tronics Services Inc. 11176 Huff Boulevard, Delta, BC, V4E 1M2

[www.seatronicsservices.com](http://www.seatronicsservices.com), email:[seatronicsservices@gmail.com](mailto:seatronicsservices@gmail.com) or by phone at 778-552-9392.

OPTION A USING TWO TOUCH SCREEN ALARM PANELS WITH THE STARTER PANEL



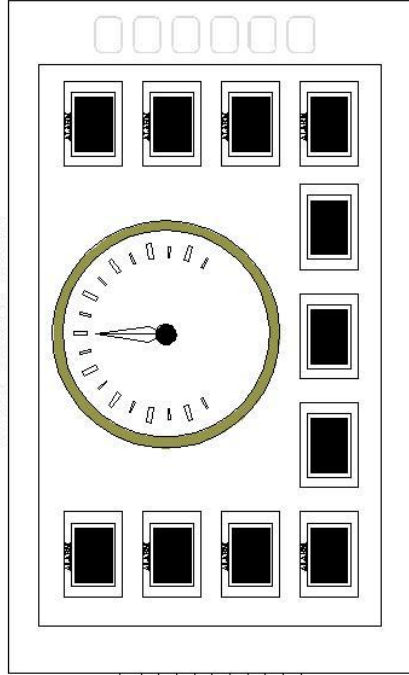
OPTION B USING TWO TOUCH SCREEN ALARM PANELS WITH ONE PANEL MOUNTED ON THE STARTER PANEL



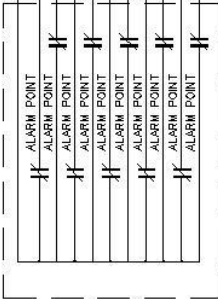
ALARM POINT	ALARM #	DELAY	ACTIVE WHEN
PUMP RUN	ALARM 1	STATUS	CONTACT CLOSED
PUMP STOP	ALARM 2	STATUS	CONTACT CLOSED
AC FAIL	ALARM 3	1 SEC.	CONTACT OPEN
DC FAIL	ALARM 4	1 SEC.	CONTACT OPEN
PHASE FAIL	ALARM 5	1 SEC.	CONTACT OPEN
OVERLOAD	ALARM 6	1 SEC.	CONTACT OPEN
LOW OIL LEVEL	ALARM 7	10 SEC.	CONTACT OPEN
HIGH OIL TEMP	ALARM 8	1 SEC.	CONTACT OPEN
LOW PRESSURE	ALARM 9	1 SEC.	CONTACT OPEN
OIL FILTER FAIL	ALARM 10	1 SEC.	CONTACT OPEN

SEI-TRONICS SERVICES, INC.		TITLE: SINGLE PUMP TWIN ALARM	
WWW.SEI-TRONICS.COM		PUMP TWIN ALARM SYSTEM BLOCK	
PROJECT: STARTER/ALARM PANEL		CONTRACT # N/A	
CUSTOMER: N/A	DATE: 09/10/10	PART # N/A	SCALE: N/A
DRAWN: E.A.	DATE: 09/08/10	ISSUE # 1	REVISION: 1
CHECKED: E.A.	DATE: 09/08/10	SCALE: 1/4"	REVISION: A

WHEEL HOUSE  
TOUCH SCREEN PANEL



10 ALARM POINTS



PRESSURE SENSOR 0-10VDC

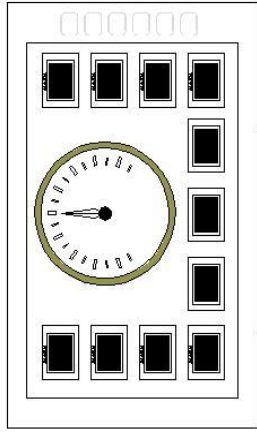
BREAKER 24 VDC POWER

TO EXTERNAL ALARMS



SEA-TRONICS SERVICES INC.		TITLE		SINGLE STATION 10 POINTS TOUCH SCREEN ALARM PANEL SYSTEM BLOCK DIAGRAM	
WWW.SEA-TRONICSSERVICES.COM		PROJECT		10 POINTS ALARM PANEL	
CUSTOMER		CONTRACT #		N/A	
N/A		DRAWN		H.A.	
CHECKED		SCALE		N/A	
DRAWN #		PART #		N/A	
A-100100		DRAWING #		3/3	
REVISION		A			

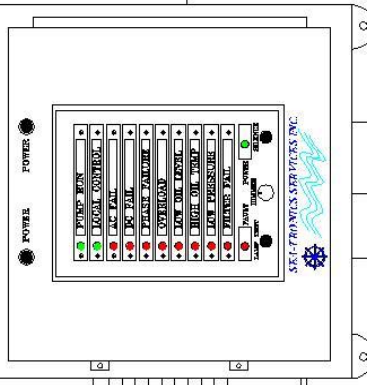
WHEEL HOUSE  
TOUCH SCREEN PANEL



TO EXTERNAL ALARM

CONTROL SIGNALS

ENGINE ROOM  
ALARM PANEL

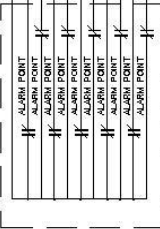


TO EXTERNAL ALARM

PRIMARY POWER

SECONDARY POWER

10 ALARM POINTS



OPTIONAL

PRESS SENSORS 0-10VDC



**SEA-TRONICS SERVICES INC.**  
 TITLE TWIN STATION 10 POINTS  
 ALARM PANEL STANDARD/  
 TOUCH PANEL SYSTEM  
 BLOCK DIAGRAM  
 www.seatronicsservices.com

CUSTOMER	N/A	PROJECT	10 POINTS ALARM PANEL	CONTRACT #	N/A
DRAWN	H.A.	DD MM YY	20 03 17	PART #	N/A
CHECKED	H.A.	20 03 17	DRAWING #	A-100100	SCALE N/A
					SHEET 2/2
					REVISION A